

ERP Application

Net808Source Business is an ERP application, developed by Net808Source solutions, which tries to address the enterprise wide needs for an organization by tightly integrating the various business functions. Net808Source Business can be customized for any business. It manages most of the common processes applicable to all industry segments like Sales Order Processing, Shipping, Invoicing, BOM Processing, Purchase Order Processing, all types of Voucher Processing, Outside Processing, integrating these functions into a single system. Many organizations face the problem of incompatible information systems that were developed over the past several years running on diverse software platforms. It leads to nearly impossible problems of integrated data locked up among the diverse systems.

Snap Shots:

1. Purchase Order-Import

Net808Source Business

Records Master Setup Transactions Favorites Reports Utilities Window Help Log-Out Exit

Type: Purchase Order-Import Ref Details Terms

Status: Released Charges IMPORT Ctn. No: 11 Qtn. Dt: 11/07/2006

Sr. No: POI-8 R No: Date: 15/07/2006 Catgry Head: All P.O.Type: Regular

Supplier: Industrial Oil Distributors Sales Tx Firm: Firm F Excise Bill: Rate Inclusive of Exc

Bill To: Industrial Oil Distributors Dispatch Mod: By Road Delivery Date: 30/07/2006

Plot No X-279, Shop No.C-2 Mahavir Complex Opp Delivery Term: Ex Work Pymt. Terms: 15 Days

Aurangabad

Same

Get Approved

No	Prod Code	Product Name	Unit	Quantity	Rate	Disc %	Disc Amt	Amount	Remarks	Insp
1	24121143	Integral Duct Assy. Complete For 3	NOS	100.000	10.00	0.00	0.00	1000.00		Y
2	24121144	Air Filter Complete For 3WH2S RE	NOS	200.000	20.00	0.00	0.00	4000.00		Y
3	24161320	Pin	NOS	300.000	30.00	0.00	0.00	9000.00		N
4	22120308	Flange	NOS	400.000	40.00	0.00	0.00	16000.00		N

4 1000.000 0.00 0.00 30000.00

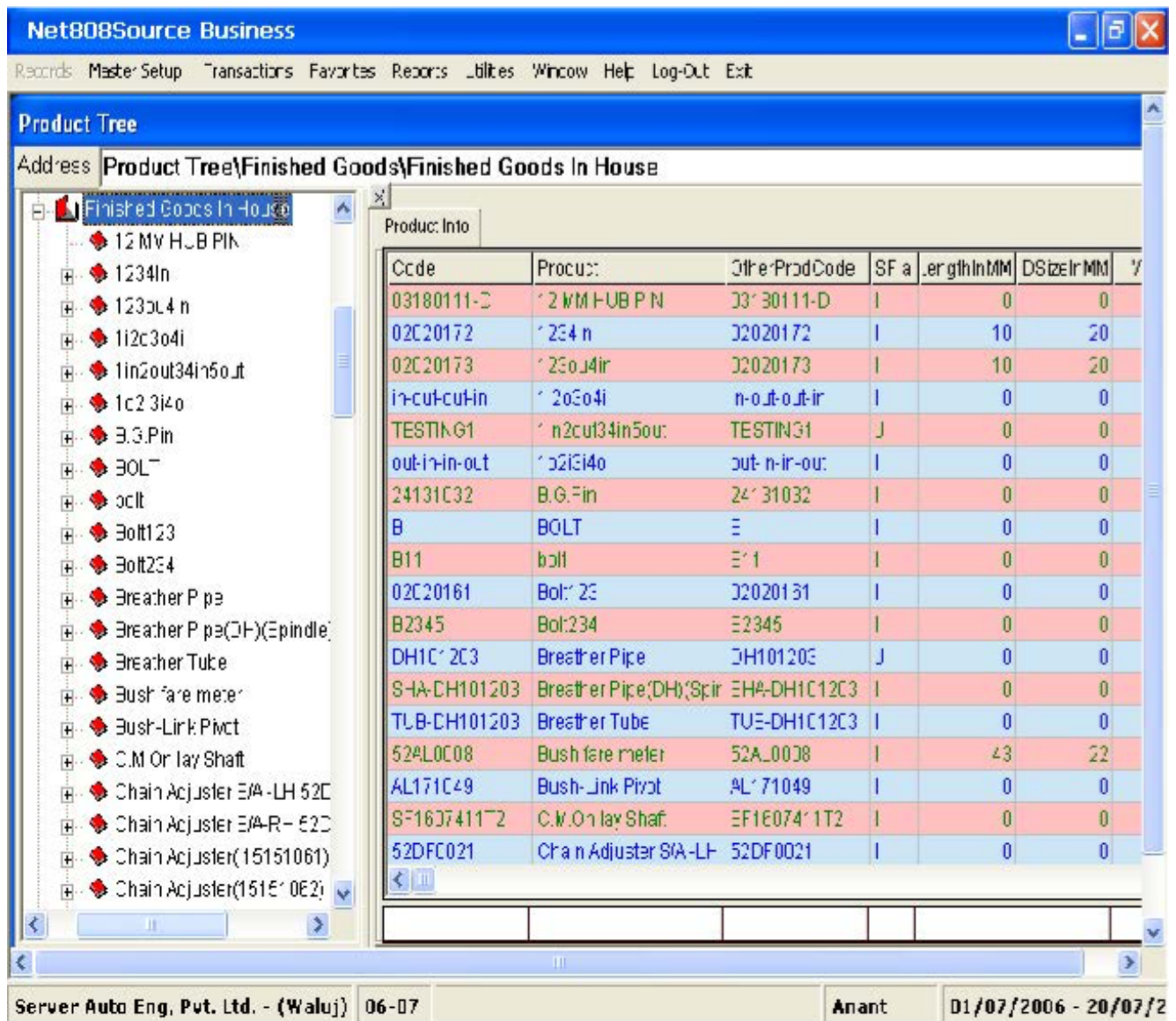
Charge Name	P/F	Value +/-	Charge
Discount	P	0 -	0.00
Other Charge	P	0 +	0.00
Purc. Surcharge	F	0 +	0.00
Purchase TOT	F	0 +	0.00

Save [F6] Edit [F6] Cancel [ESC] Print [F9] Save-Edit [F10] Exit [F12]

Last Trans Amt: 0.00 Last Serial No: Grand Total: 30000.00

Server Auto Eng. Pvt. Ltd. - (Walui) 06-07 Transactions - Purchase Order-Import 5 01/07/2006 - 20/07/2

2. Product tree view



Introduction:

Net808Source Business is software where we don't design a form in VB.NET. Each time if a user asks for a new control in existing Transaction Form/new form/feature in transaction form, we can configure the software by manipulating through Setup-Document types, Document serial numbers, and Client custom menu. We can rather configure the system as per the requirements of the client.

Features:

Get feel of own customized software, for unique business requirements.

- Fully Windows compatible software.
- Both Windows and DOS printing supported.

- Multi-Location! Multi-Firm support.
- Configurable Architecture.
- Metadata Based Design.
- Customer Centric Implementation than Product Centric Implementation.
- Ability to Export the Data in Excel Format
- Change /add /remove fields from the screen so as to make the working screen more and more useful, easy to understand, Can change the screens as per requirement with-in no time.
- Implementing your transaction flow as per your choice
- Reduce manual errors /faults during important times of the sale and purchase.
- The simplistic structure, easy implementation High user level security is added in the EzBusiness, which will not allow and unauthorized editing/viewing of the database. • The Report-Writer gives the flexibility and advanced customization capabilities eventually tailoring the reports to your business needs Statistical and Graphical analysis of data.

The Challenges: The Net808Source Business Blend:

Net808Source Business team has followed its proven & tested approach to break the challenges & deliver the product.

- Acceptance of an order
- Configurable document serial numbers
- Work-in-progress tracking.
- Hassle-free Purchase Order preparation on the basis of vendor and material availability.
- Effective management and traceability of Purchase Inquiry, Quotations and Purchase Orders.
- Comprehensive reports on all Modules.
- TR6 Challans, PLA Register, RG1 Daily stock register, 12 BA.

Internally Developed Report-Writer Tool for DOS Based Report. Ability to Import Data from Any Windows compatible format. Statistical and Graphical analysis of data. Used Database Replication for synchronizing multiple servers.

- Payroll Reports (ESI Reports, PF Reports, Form 3A, 6A, 12A, Form 5, 10).
- Accounts Reports - Account ledger Account group ledger, Trial Balance, TDS Reports, Profit and Loss, Bank Reconciliation

Customer Benefits:

- Keep the track on the quality and the time control.
- Creates easily Sales Plan of the Month. Planned Contribution Customer wise / Account code wise
- Flexible solution which can be customized as per requirements of any business.

Point of Sale Application: This is a product developed for providing Inventory solutions to Retailers. As per business requirement different type of master forms, transaction and invoices forms and reports can be developed run time in exe. The design is Metadata driven. With database is changed, it appears as complete different product. Business rules and validation of customers can be configured using functions and Store procedures External modules can be plugged in to the software. And appears Multi stores Transfer Facility (import-Export Stock Facilities) in the software.

Features:

- Reports for Invoices/Transactions (sale details)/ Purchase Details, Customer details.
- Multi store stock transfer.
- Stored procedures to update the inventory for all types of Inventory movements. i.e. internal to plant as well as external movements and receipts.
- On Hand Inventory procedures for each location and also developed reports for "As on Date Inventory" by applying delta between the dates.
- Involved in report generation using in built in tools as per customer requirement.
- More than 100 clients in USA.